

# Miza company for Import and Export.

Email: miza\_ly@outlook.com.

Tel-01: +447477838391

Tel-02: +218917333191

## QUOTATION SHEET

Issued to: Our clients in Libya							Date:	31/12/2019
Project name:							Contact Person:	
Dimension: 100*10*3, poultry house. Wind speed: 80km/h.							Client:	
							Delivery Term:	Misrata port
Item	Name	Specification	Qty	Unit	Unit price (USD)	Amount (USD)	Remarks	
<b>A Steel structure</b>								
1	 Beam and column	Welded H steel	10.47	T	900.00	9423.00	Primary structure Q345B/Secondary structure Q235B, components: fabricate, cut, straightening; shotblasting and derust Sa 2.5 grade; anti-rust painting	
2	 Roof tube brace	Dia. 89*2.5	2.09	T	776.92	1623.77		
3	 Roof brace	20 mm steel bar	0.23	T	776.92	176.62		
4	 Column brace	16 mm steel bar	0.12	T	776.92	96.86		
5	 Purlin brace	L50*4.0 angle steel	0.16	T	776.92	125.34		
6	 Tie rod	12mm steel bar	0.92	T	776.92	717.88		
7	 Casing	Dia .32*2.5	0.31	T	776.92	239.29		
8	 Roof purlin	C160*60*20*2.2	6.29	T	723.08	4549.60	Q235B, galvanized	
9	 Wall girt	C140*50*20*2.2	3.74	T	723.08	2704.31		
						<b>Subtotal:</b>	<b>US\$19,656.41</b>	
<b>B Roof and wall</b>								
1	 Roof panel	0.5/0.5-50mm EPS sandwich panel	1188.00	m <sup>2</sup>	9.77	11606.76	REP5960	
2	 Wall panel	0.5/0.5-50mm EPS sandwich panel	572.00	m <sup>2</sup>	8.31	4752.00	W-EP5950	
3	 Cooling pad	Electric cooling pad	58.67	m <sup>3</sup>	30.77	1805.13		
						<b>Subtotal:</b>	<b>US\$18,163.89</b>	
<b>C Door and window</b>								
1	 Door 1	2000(W)*2400(H)*6	21.12	m <sup>2</sup>	53.85	1137.23	Sandwich panel sliding door	

# Miza company for Import and Export.

Email: miza\_ly@outlook.com.

Tel-01: +447477838391

Tel-02: +218917333191

2		Door 2	950(W)*2050(H)*2	2.93	m <sup>2</sup>	61.54	180.51	Steel plate security door
							Subtotal:	US\$1,317.74
<b>D</b>		<b>Accessories</b>						
1		Self-drilling screw	125*5.5	3593	pcs	0.05	165.85	For roof board installation
2		Self-drilling screw	75*5.5	1760	pcs	0.04	67.69	For wall board installation
3		Rivet nut	4*13	1760	pcs	0.01	13.54	For bending part installation
4		Color steel accessories	0.5mm	191	m <sup>2</sup>	4.31	821.33	Bending part
7		Ventilator	1080*1080	9	pcs	230.77	2030.77	
8		Anchor bolt	M24	176	pcs	3.08	541.54	Black
9		Standard nut	M24	528	pcs	0.46	243.69	Black
10		High Strength bolt	M20	477	pcs	0.77	366.67	Black, 10.9S
11		Standard bolt	M20	220	pcs	0.46	101.54	Black
12		Standard bolt	M12	1833	pcs	0.15	282.05	Black
							Subtotal:	US\$4,634.67
<b>E</b>		<b>Transportation</b>						
1		Packing, container loading, container haulage from Lanying factory to nearest seaport in China, Custom declaration and port charge in China	40'OT	2	ctns	923.08	1846.15	
2	40'HQ		2	ctns	923.08	1846.15		
	40'OT		2	ctns	2990.00	5980.00		



# company for Import and Export.

Email: miza\_ly@outlook.com.

Tel-01: +447477838391

Tel-02: +218917333191

3		Shipping cost to Dar es salaam	40'HQ	2	ctns	2390.00	4780.00		
								Subtotal:	US\$14,452.31
								Total:	<b>US\$58,225.02</b>
Floor area:			1500m <sup>2</sup>					Unit price:	<b>\$38.82/m<sup>2</sup></b>
F	Payment method						30% deposit:	US\$16,797.29	
								Balance to be paid:	US\$39,193.67

**PAYMENT TERM:**

30% deposit before production, balance to be paid before shipment on FOB term

**VALIDITY OF THE QUOTATION:**

This quotation is valid within 7 days from the date of this quotation.

**DELIVERY TIME:**

Shipment will be made in 30 days after deposit payment has been received by Seller and construction drawing has been confirmed by Customer

**Notes:**

1.This quotation doesn't include concrete ground foundation

# BY STEEL STRUCTURE GROUP LIMITED



PRODUCT INTRODUCTION-POULTRY HOUSE

---

# POULTRY HOUSE

---

Poultry house, also named as chicken house, is the building put up to protect chickens (broilers and layers) from bad weathers and provide the chickens living space with feeding system, drinking system, waste cleaning and other equipment. Chicken farm owners shall have a clear idea of how many chickens to raise and what kind of chicken to raise before planning the layout of the house. It is also important to consider about the local weather condition as improper layout may cause huge reduction of output when the chickens are living in a bad environment.

Generally the height of poultry houses is between 2.5m-3.5m (at eaves). The width of the poultry houses is decided according to the layout of equipment inside and cannot be too large considering ventilation. Steel structure poultry houses are usually designed with the width of 8-15m. Length no larger than 120m.

In modern chicken farms, chicken feeding is operated in large scale in a automatic way. A complete set of equipment in a poultry house consists of the following items: automatic feeding system, automatic nipple drinking system, exhaust fan, evaporative cooling pad, floor for dung leakage, etc..



# TYPES OF STEEL FRAME

Steel structure poultry houses can be designed in different types of frames. But most common-seen structures are steel gabled frame as the span, length and height of poultry houses are similar.



steel gabled frame  
poultry house



steel gabled frame  
poultry house

# GABLED FRAME SHED



steel gabled frame poultry house



# GABLED FRAME SHED



steel gabled frame poultry house



steel gabled frame poultry house



# OTHER FRAMES SHED



Triangle roof truss poultry shed



Arc roof truss poultry shed

# CLADDING SYSTEM

---

Insulation and ventilation are very important for poultry houses. Room temperature inside must be neither too high nor too low. In tropical regions, unfixed claddings are recommended so the walls can be open to guarantee good ventilation. In cold regions extra insulation for the roof & wall system (sandwich panels, composite layers of insulation) is usually chosen to keep warm. Single steel color sheets are always used too. Followings are different kinds of cladding systems for poultry houses.



Composite layer insulation (steel color sheet+glass wool)



# CLADDING SYSTEM



PU Sandwich Panel Poultry House

# CLADDING SYSTEM



EPS Sandwich Panel Poultry House





# CLADDING SYSTEM



Unfixed cladding (sliding walls)



Unfixed cladding (rolled-up walls)

# CLADDING SYSTEM

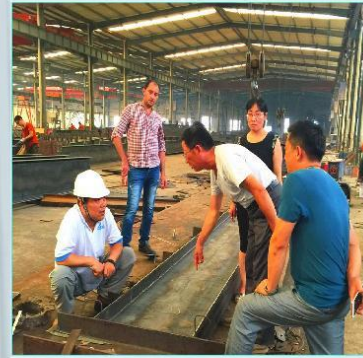


Steel color sheet poultry house



# OUR 54 SETS POULTRY FARM PROJECT IN QATAR

Our Engineering Team for Barwa client



## Construction Site Picture for Barwa Warehouse







